

# Tree Fork

For skid-steer loaders

## FEATURES:

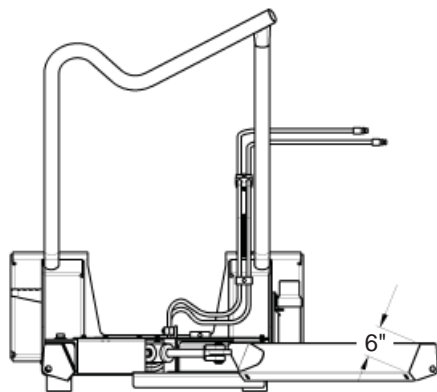
- position plants, trees and large shrubs quickly and with ease
- use for lifting, carrying, and lowering balled and container-grown trees & shrubs
- also great for lifting, carrying, and lowering landscape rocks
- will grasp up to 44" tree balls
- smooth radius padded trunk support arm is offset for improved visibility
- 6" tread plate on forks to firmly grip bags, boxes, pots, and rocks
- 3,000 lb. carrying capacity
- heavy duty engineered forks
- optional adjustable pressure setting to prevent tree ball or container damage
- 2 year limited warranty



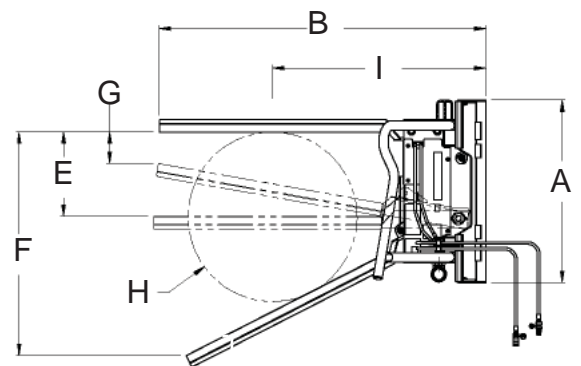
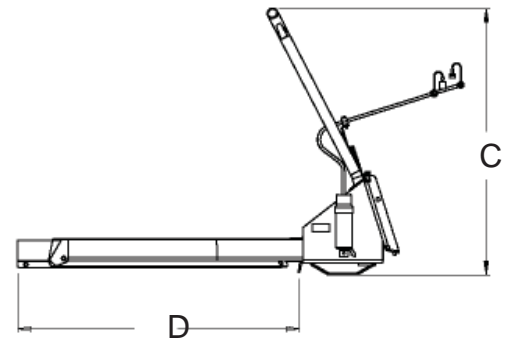
# Tree Fork

## FEATURES:

- heavy gage steel construction
- offset trunk support arm for improved visibility
- rounded corners and edges for better tree protection
- optional variable clamp pressure control
- standard tread plate forks secure loads without tearing tree ball wrap
- high visibility through mounting structure
- flat fork ends allow product to be gently pushed into position on transport truck
- nylon covered cushioned wrap on top bar of the support arm



Tree Fork	"
A. overall width	48"
B. overall length	85"
C. overall height	59"
D. fork length	64"
E. parallel spread of forks	22"
F. fork opening at tips (open)	58"
G. fork opening at tips (closed)	8"
H. maximum ball size	44"
D. distance from hitch to center of 44" ball	56"
weight	
minimum width between forks	
maximum load capacity	



Specifications and design are subject to change without notice and without liability, therefore, whenever applicable specifications are in accordance with SAE standards.

PH: 800-922-2981  
 FX: (563) 922-2700  
 P.O. Box 266  
 Delhi, IA 52223-0266  
 United States of America  
 www.paladinbrands.com



PALADIN LIGHT CONSTRUCTION